

Surface-mounted wall light, Casa, 3 W, 3000/4000 K, Article No.: 731158 / 731159

Dear customer,

thank you for deciding to purchase our product. The product fulfils the requirements of effective European and national guidelines.

To maintain the condition of the product and to ensure safe operation, you - as the user - must observe the product notes and the operation manual! They contain important information for the start-up and handling. It is important, therefore, that these documents are archived carefully for referring to information at a later stage.

1. Safety Instructions

We are not responsible for any property damage or personal injury caused by failure to observe these product notes and manual, improper handling or unauthorised modifications.

It can only be installed by a qualified electrician.

Make sure that the item has not been damaged during transport before putting the light into operation. It may not be operated if there are any damages to electrical parts.

It may only be operated once removed from the packaging.

The type plate must not be removed.

The connection lines in the building must be disconnected before installation and secured against being switched back on.

Make sure the electrical specifications for the connection lines correspond with the specifications given on the nameplate of this product.

We recommend that you protect the product with a residual-current-operated protective device. Follow all installation regulations applicable at your location.

Make sure that the cables and plugs are not subject to tension or torsional forces and do not bend the cables. Protect all cables and insulation against possible damages.

Output lines should be laid separately and spaced apart from other lines. The power supply cables and the lamp feeders must not cross each other.

Do not allow the product to come into contact with extreme heat or naked flames.

Use the supplied fastening material only when it is suited for the installation background.

The product must not be covered with objects (decorations) or thermally insulating coverings /similar materials.

Before disposal of the packaging material make sure that all components are removed.

Keep packaging material away from the reach of children and pets. The packaging contains small parts that may be swallowed by children.

Surface-mounted wall light, Casa, 3 W, 3000/4000 K, Article No.: 731158 / 731159

2. Proper Use

This product is only intended for lighting purposes and may only be operated on normal or non-flammable surfaces.

Intended for installation outside the hand area when operated with incandescent bulbs.

The luminaire is designed for outdoor use.

Make sure that the surface is suitable for permanently and reliably taking the weight of the light.

3. Care

Repairs may only be carried out by a qualified electrician.

Disconnect the entire product from the mains first and allow it to cool down before cleaning or maintaining.

Use a dry or slightly moistened cloth for cleaning.

Never use any chemicals, flammable cleaning agents or abrasives. These may cause damage to the surface coating and/or the insulators.

4. Faulty Function

Light switched on at the switch?

Transformer mounted and connected properly?

If available; remote control intact? Check the batteries.

Check the connected lines.

Lamp defective?

5. Changing Lamps

The light source of this lamp is not replaceable. When the light source has reached its end of life, replace the entire luminaire.

6. Storage and Disposal

Used electronic devices must be brought back to public collection points and must not be disposed of as household waste.

Storage in a dry and clean environment. Do not strain the product mechanically during storage.

Artikel Nr. / Article No.: 731158 / 731159

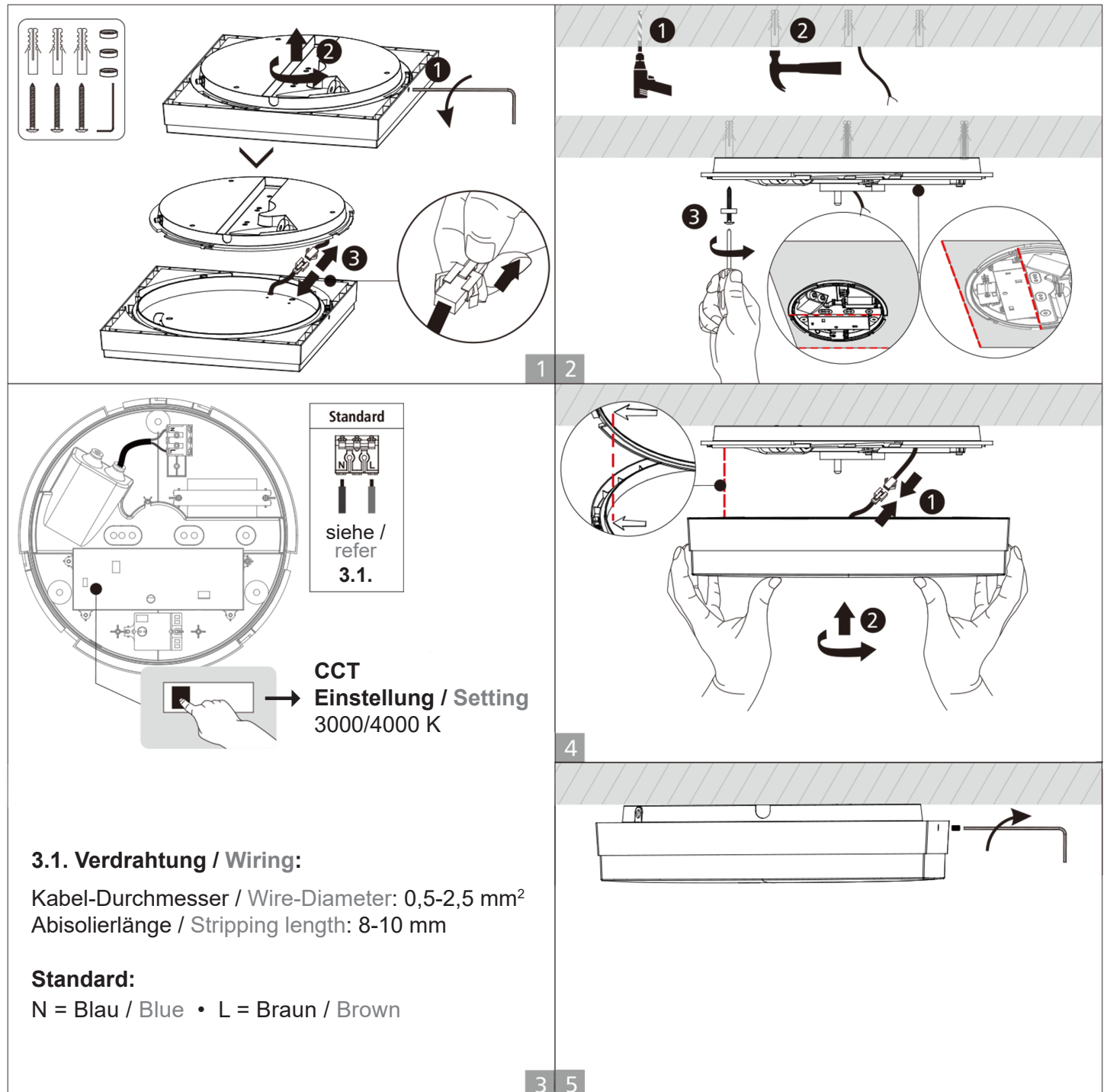
Wandaufbauleuchte, Casa / Surface mounted wall lamp, Casa
200-240V AC/50-60Hz, 3,0 W

Achtung! Für diese Arbeiten müssen Sie die Spannungsversorgung trennen.

Attention! For this work you must turn off the power supply.

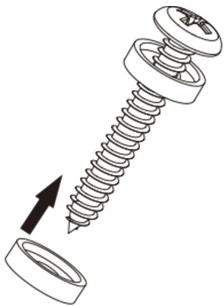
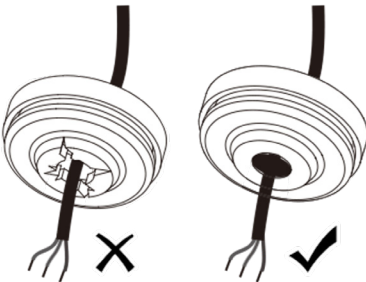
Dieses Produkt enthält eine Lichtquelle der Energieeffizienzklasse C.

This product contains a light source of energy efficiency class C.



Artikel Nr. / Article No.: 731158 / 731159

Wandaufbauleuchte, Casa / Surface mounted wall lamp, Casa
200-240V AC/50-60Hz, 3,0 W

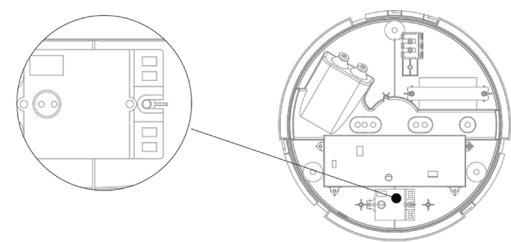
Tipps zur wasserdichten Installation (falls zutreffend) / Waterproof Installation Tips(if applicable)		
Wasserdichte Dichtung zum Anschrauben / Waterproof gasket for screwing		Befestigen Sie die wasserdichte Dichtung beim eindrehen der Befestigungsschrauben, um Eindringen von Wasser zu verhindern. / Fasten the waterproof gasket into the mounting screws to prevent water from leaking inside.
Wasserdichte Tülle zur Kabeleinführung / Waterproof grommet for cable entry		Verfüllen Sie eine Lücke zwischen Kabel und Kabeleinführung mit wasserbeständigem Silikon, um Eindringen von Wasser zu verhindern. / If there is gap between cable and waterproof grommet, please fill it with waterresistant silicone caulk to prevent water from leaking inside.

Montageanleitung /
Mounting Instruction

Artikel Nr. / Article No.: 731158 / 731159

Wandaufbauleuchte, Casa / Surface mounted wall lamp, Casa
200-240V AC/50-60Hz, 3,0 W

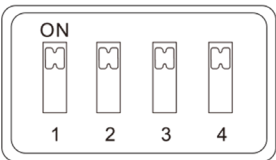
Dämmerungssensor / Twilight sensor



Technische Daten / Technical data

Betriebsspannung / Operating Voltage: 220-240VAC 50Hz
Leistungsaufnahme / Power Consumption: < 0,5 W
Mindestmontageabstand / Minimum mounting Distance: empfohlen mehr als 3m
recommended more than 3m
Arbeitstemperatur / Operating Temperature: -20°C - 60°C
Tageslichtschwelle Ein/Aus-Werte / Daylight Threshold On/Off Values:
5lux/25lux, 10lux/50lux, 25lux/75lux, 50lux/100lux, 100lux/200lux, 150lux/300lux, 200lux/400lux, disable

Werkeinstellung / Factory setting



An / On	Aus / Off
5 Lux	25 Lux

Sensoreinstellungen / Sensor Setiing

DIP Switch →	1	2	3	4	Ein / On	Aus / Off
I	ON	ON	ON	ON	5 Lux	25 Lux
II	ON	ON	ON	-	10 Lux	50 Lux
III	ON	ON	-	ON	25 Lux	75 Lux
IV	ON	ON	-	-	50 Lux	100 Lux
V	ON	-	ON	-	100 Lux	200 Lux
VI	ON	-	-	-	150 Lux	300 Lux
VII	-	ON	-	-	200 Lux	400 Lux
VIII	-	-	-	-	keine Funktion / Disable	