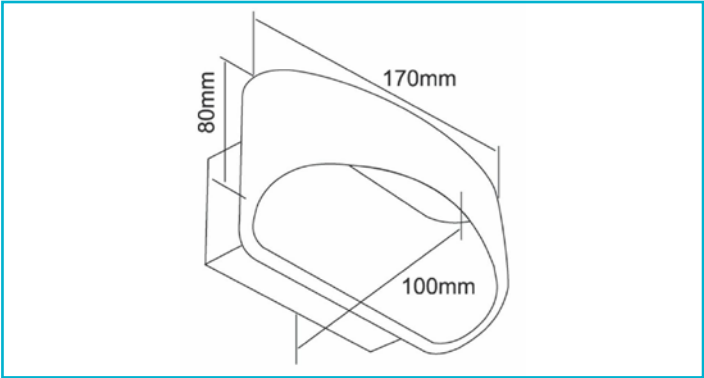
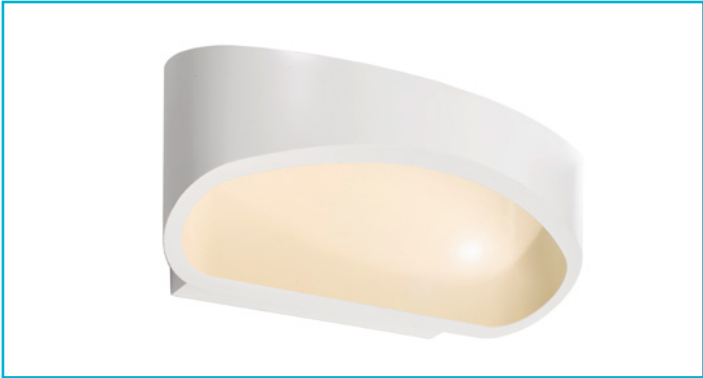


Art. no. 341194

Surface-mounted wall light Acamar, 6.9 W, DIM, 3,000 K, white



Small, fine, elegant and discreet - The ACAMAR is a light manufactured from high-quality aluminium. The colour reproduction value is over 90, which means high colour authenticity. The design is chic and interesting thanks to the rounding on one side. You can mount the light with the rounding upwards or downwards, depending on your preference. The white paint inside accentuates the warm white light and ensures pleasant scattering upwards and downwards. The outside is highly polished for an incredible shine.

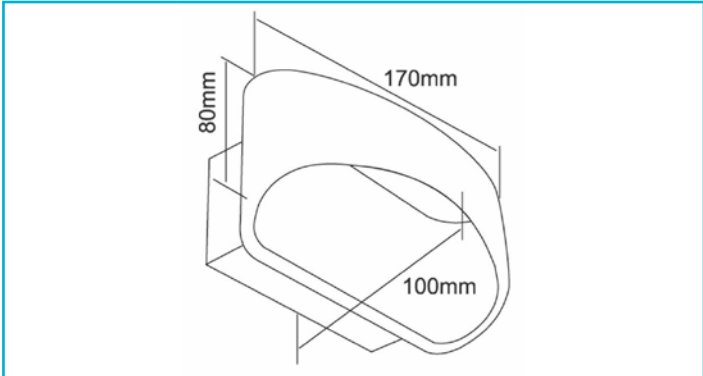
- Special features
- Very high colour reproduction value
 - High light emission angle

Housing Material	Aluminium
Housing Color	White
Protection Class	Protection class I/protective grounding
Rated Input	6.9 W
Rated Power Consumption Standby	0.5 W
Rated Input Voltage Frequency	220-240 V/AC 50 / 60 Hz
Power Supply Unit incl.	Yes
Connection Type	Clamp
Dimmable	Yes
Control	Leading-edge dimmer, Trailing-edge dimmer
Motion Detector	No
Light Source	LED, Light source not changeable
Color Temperature	3000 K
Colour Consistency	6 SDCM
Colour Rendering Index (Ra)	90
Rated Luminous Flux	390 lm
Rated Angle of Reflection	105 Degree
Distribution Characteristic 120°	NDLS
Light Exit Surfaces	2
Light characteristics	Direct, Indirect
Light direction	Top, Below
Length	170 mm
Width	100 mm
Height	80 mm
Base length	120 mm
Base width	60 mm
Base height	33 mm
Working Temperature	-5 to 40 °C

Storage Temperature	-10 to 60 °C
IP Protection Class	IP 20
Life Time L70 / B50	30000 h
Switching Cycles	100000
Power Consumption EEI	7 kWh/1000h G

Art. no. 341195

Surface-mounted wall light Acamar, 6.9 W, DIM, 3,000 K, silver



Small, fine, elegant and discreet - The ACAMAR is a light manufactured from high-quality aluminium. The colour reproduction value is over 90, which means high colour authenticity. The design is chic and interesting thanks to the rounding on one side. You can mount the light with the rounding upwards or downwards, depending on your preference. The white paint inside accentuates the warm white light and ensures pleasant scattering upwards and downwards. The outside is highly polished for an incredible shine.

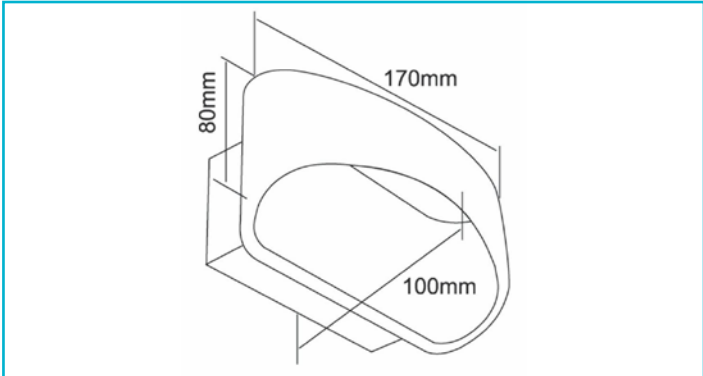
- Special features
- Very high colour reproduction value
 - High light emission angle

Housing Material	Aluminium
Housing Color	Silver, White
Protection Class	Protection class I/protective grounding
Rated Input	6.9 W
Rated Power Consumption Standby	0.5 W
Rated Input Voltage Frequency	220-240 V/AC 50 / 60 Hz
Power Supply Unit incl.	Yes
Connection Type	Clamp
Dimmable	Yes
Control	Leading-edge dimmer, Trailing-edge dimmer
Motion Detector	No
Light Source	LED, Light source not changeable
Color Temperature	3000 K
Colour Consistency	6 SDCM
Colour Rendering Index (Ra)	90
Rated Luminous Flux	400 lm
Rated Angle of Reflection	105 Degree
Distribution Characteristic 120°	NDLS
Light Exit Surfaces	2
Light characteristics	Direct, Indirect
Light direction	Top, Below
Length	170 mm
Width	100 mm
Height	80 mm
Base length	120 mm
Base width	60 mm
Base height	33 mm
Working Temperature	-5 to 40 °C

Storage Temperature	-10 to 60 °C
IP Protection Class	IP 20
Life Time L70 / B50	30000 h
Switching Cycles	100000
Power Consumption EEI	7 kWh/1000h G

Art. no. 341196

Surface-mounted wall light Acamar, 6.9 W, DIM, 3,000 K, black



Small, fine, elegant and discreet - The ACAMAR is a light manufactured from high-quality aluminium. The colour reproduction value is over 90, which means high colour authenticity. The design is chic and interesting thanks to the rounding on one side. You can mount the light with the rounding upwards or downwards, depending on your preference. The white paint inside accentuates the warm white light and ensures pleasant scattering upwards and downwards. The outside is highly polished for an incredible shine.

- Special features
- Very high colour reproduction value
 - High light emission angle

Housing Material	Aluminium
Housing Color	Black
Protection Class	Protection class I/protective grounding
Rated Input	6.9 W
Rated Power Consumption Standby	0.5 W
Rated Input Voltage Frequency	220-240 V/AC 50 / 60 Hz
Power Supply Unit incl.	Yes
Connection Type	Clamp
Dimmable	Yes
Control	Leading-edge dimmer, Trailing-edge dimmer
Motion Detector	No
Light Source	LED, Light source not changeable
Color Temperature	3000 K
Colour Consistency	6 SDCM
Colour Rendering Index (Ra)	90
Rated Luminous Flux	300 lm
Rated Angle of Reflection	105 Degree
Distribution Characteristic 120°	NDLS
Light Exit Surfaces	2
Light characteristics	Direct, Indirect
Light direction	Top, Below
Length	170 mm
Width	100 mm
Height	80 mm
Base length	120 mm
Base width	60 mm
Base height	33 mm
Working Temperature	-5 to 40 °C

Storage Temperature	-10 to 60 °C
IP Protection Class	IP 20
Life Time L70 / B50	30000 h
Switching Cycles	100000
Power Consumption EEI	7 kWh/1000h G