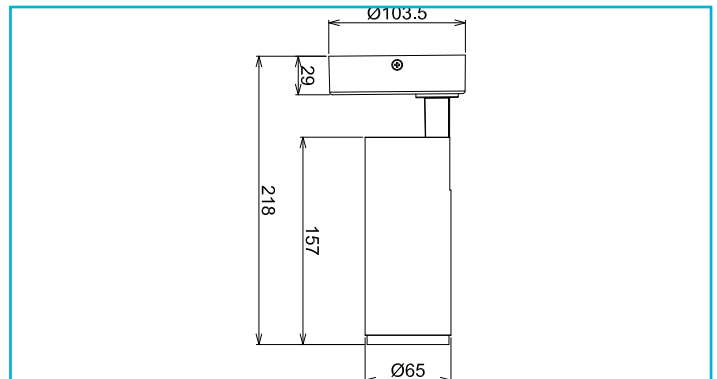


Art. no. 348226

**Surface-mounted ceiling light Lucea, Tilt, 10 W, DIM,  
2,700 K, black**



LUCEA series rotating and swivelling ceiling lights are available with 6, 10, 15, 20 and 30 W output. The lights can be customised with a rotation angle of 350° and a swivel angle of 90°. They provide up to 2,900 lumens of light output depending on the design. The light emission angle can be narrowed or expanded by exchanging optionally available lenses.

**Special features**

- incl. black reflector ring
- Can be customised with a wide range of accessories

<b>Housing Material</b>	Aluminium	<b>Working Temperature</b>	-20 to 40 °C
<b>Housing Color</b>	Black	<b>Storage Temperature</b>	-20 to 65 °C
<b>Material of Lens</b>	PMMA	<b>IP Protection Class</b>	IP 20
<b>Protection Class</b>	Protection class I/protective grounding	<b>Life Time L70 / B50</b>	50000 h
<b>Rated Input</b>	10 W	<b>Switching Cycles</b>	100000
<b>Rated Power Consumption Standby</b>	1 W	<b>Power Consumption</b>	10 kWh/1000h
<b>Rated Input Voltage Frequency</b>	200-240 V/AC 50 / 60 Hz	<b>Energy Efficiency Class Lightsource</b>	This product contains a light source of energy efficiency class E.
<b>Power Supply Unit incl.</b>	Yes		
<b>Connection Type</b>	Clamp		
<b>Dimmable</b>	Yes		
<b>Control</b>	Leading-edge dimmer, Trailing-edge dimmer		
<b>Motion Detector</b>	No		
<b>Light Source</b>	LED, Light source changeable TC		
<b>Color Temperature</b>	2700 K		
<b>Colour Consistency</b>	5 SDCM		
<b>Colour Rendering Index (Ra)</b>	90		
<b>Rated Luminous Flux</b>	1300 lm		
<b>Rated Angle of Reflection</b>	36 Degree		
<b>UGR</b>	16		
<b>Swivel Angle</b>	90 Degree		
<b>Rotation Angle</b>	350 Degree		
<b>Light Exit Surfaces</b>	1		
<b>Light characteristics</b>	Direct		
<b>Light direction</b>	Below		
<b>Height</b>	157 mm		
<b>Diameter</b>	65 mm		
<b>Base height</b>	29 mm		
<b>Base diameter</b>	103.5 mm		