

**Dear customer,**

thank you for deciding to purchase our product. The product fulfils the requirements of effective European and national guidelines.

To maintain the condition of the product and to ensure safe operation, you - as the user - must observe the product notes and the operation manual! They contain important information for the start-up and handling. It is important, therefore, that these documents are archived carefully for referring to information at a later stage.

## **1. Safety Instructions**

We are not responsible for any property damage or personal injury caused by failure to observe these product notes and manual, improper handling or unauthorised modifications.

It can only be installed by a qualified electrician.

Make sure that the item has not been damaged during transport before putting the light into operation. It may not be operated if there are any damages to electrical parts.

The luminaire may only be operated completely with its protective cover.

It may only be operated once removed from the packaging.

The type plate must not be removed.

The connection lines in the building must be disconnected before installation and secured against being switched back on. For this, trip the corresponding fuse switch in the building installation.

Make sure the electrical specifications for the connection lines correspond with the specifications given on the nameplate of this product.

We recommend that you protect the product with a residual-current-operated protective device. Follow all installation regulations applicable at your location.

Make sure that the cables and plugs are not subject to tension or torsional forces and do not bend the cables. Protect all cables and insulation against possible damages.

Output lines should be laid separately and spaced apart from other lines. The power supply cables and the lamp feeders must not cross each other.

Do not allow the product to come into contact with extreme heat or naked flames.

Use the supplied fastening material only when it is suited for the installation background.

The product must not be covered with objects (decorations) or thermally insulating coverings /similar materials.

Before disposal of the packaging material make sure that all components are removed.

Keep packaging material away from the reach of children and pets. The packaging contains small parts that may be swallowed by children.

## **2. Proper Use**

This product is only intended for lighting purposes and may only be operated on normal or non-flammable surfaces.

Use the product only in protected and dry interior rooms.

Make sure that the surface is suitable for permanently and reliably taking the weight of the light.

## **3. Care**

Repairs may only be carried out by a qualified electrician.

If the external flexible cable or cord of this luminaire is damaged, it shall be replaced by a special cord or cord exclusively available from the manufacturer or his service agent.

Disconnect the entire product from the mains first and allow it to cool down before cleaning or maintaining.

Use a dry or slightly moistened cloth for cleaning.

Never use any chemicals, flammable cleaning agents or abrasives. These may cause damage to the surface coating and/or the insulators.

## **4. Faulty Function**

Light switched on at the switch?

Transformer mounted and connected properly?

If available; remote control intact? Check the batteries.

Check the connected lines.

Lamp defective?

## **5. Changing Lamps**

The light source of this lamp is not replaceable. When the light source has reached its end of life, replace the entire luminaire.

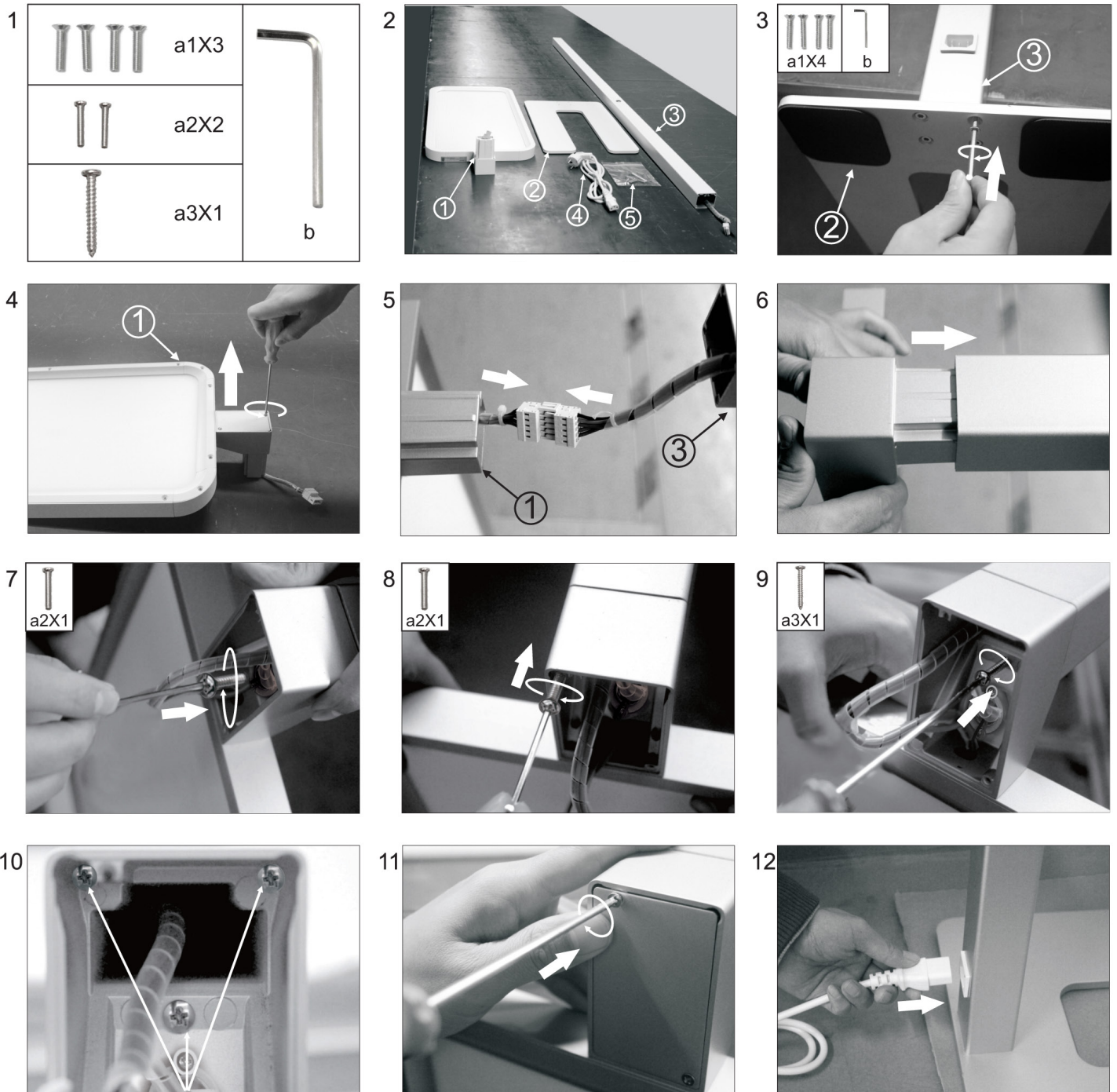
## **6. Storage and Disposal**

Used electronic devices must be brought back to public collection points and must not be disposed of as household waste.

Storage in a dry and clean environment. Do not strain the product mechanically during storage.

# Montageanleitung / Mounting instruction

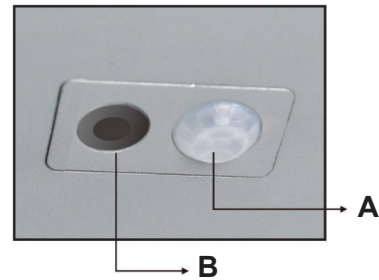
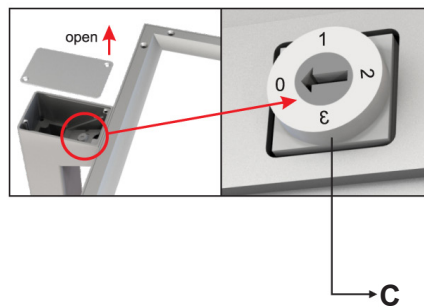
Stehleuchte, Office One Motion / *Floor lamp, Office One Motion*  
200-240V AC/50-60Hz, 80,00 W



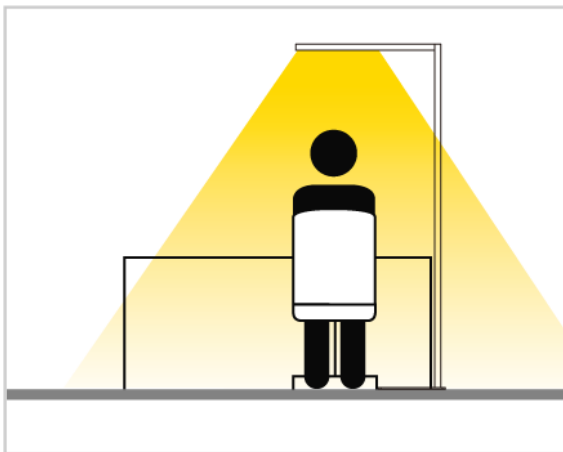
**!** Wenn die äußere flexible Leitung dieser Leuchte beschädigt ist, darf sie nur durch eine spezielle Leitung oder durch eine Leitung ersetzt werden, die ausschließlich über den Hersteller oder seinen Servicevertreter erhältlich ist.

**!** If the external flexible cable or cord of this luminaire is damaged, it shall be replaced by a special cord or cord exclusively available from the manufacturer or his service agent.

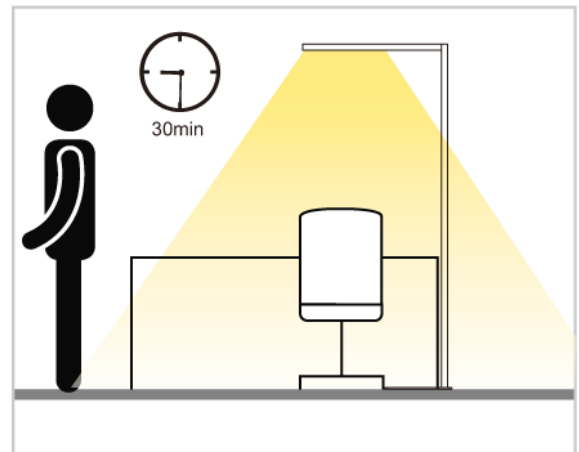
Stehleuchte, Office One Motion / Floor lamp, Office One Motion  
200-240V AC/50-60Hz, 80,00 W



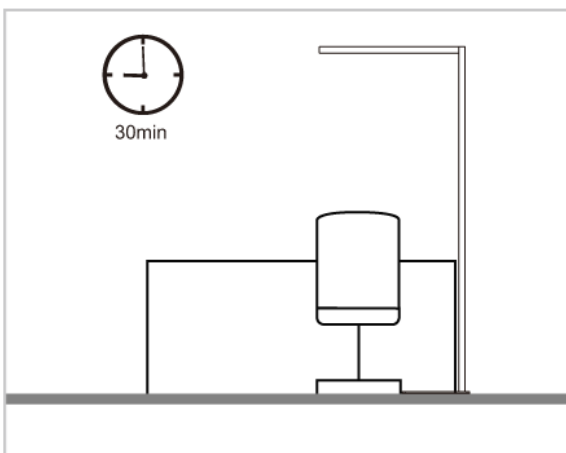
A: Bewegungssensor / Motion Sensor



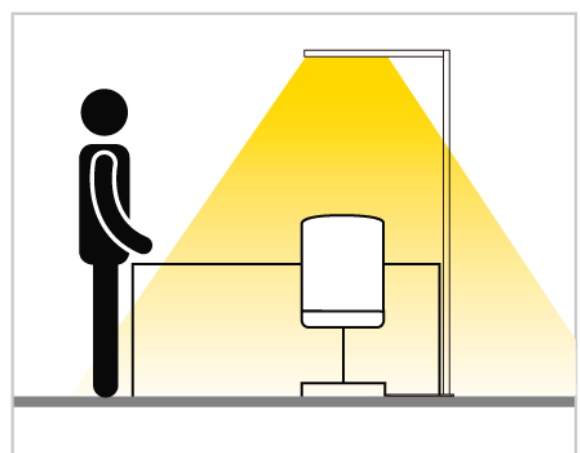
1. Leuchte einschalten /  
turn on the lamp



2. ohne Bewegung nimmt die Helligkeit auf 30% ab /  
without presence brightness reduce to 30%



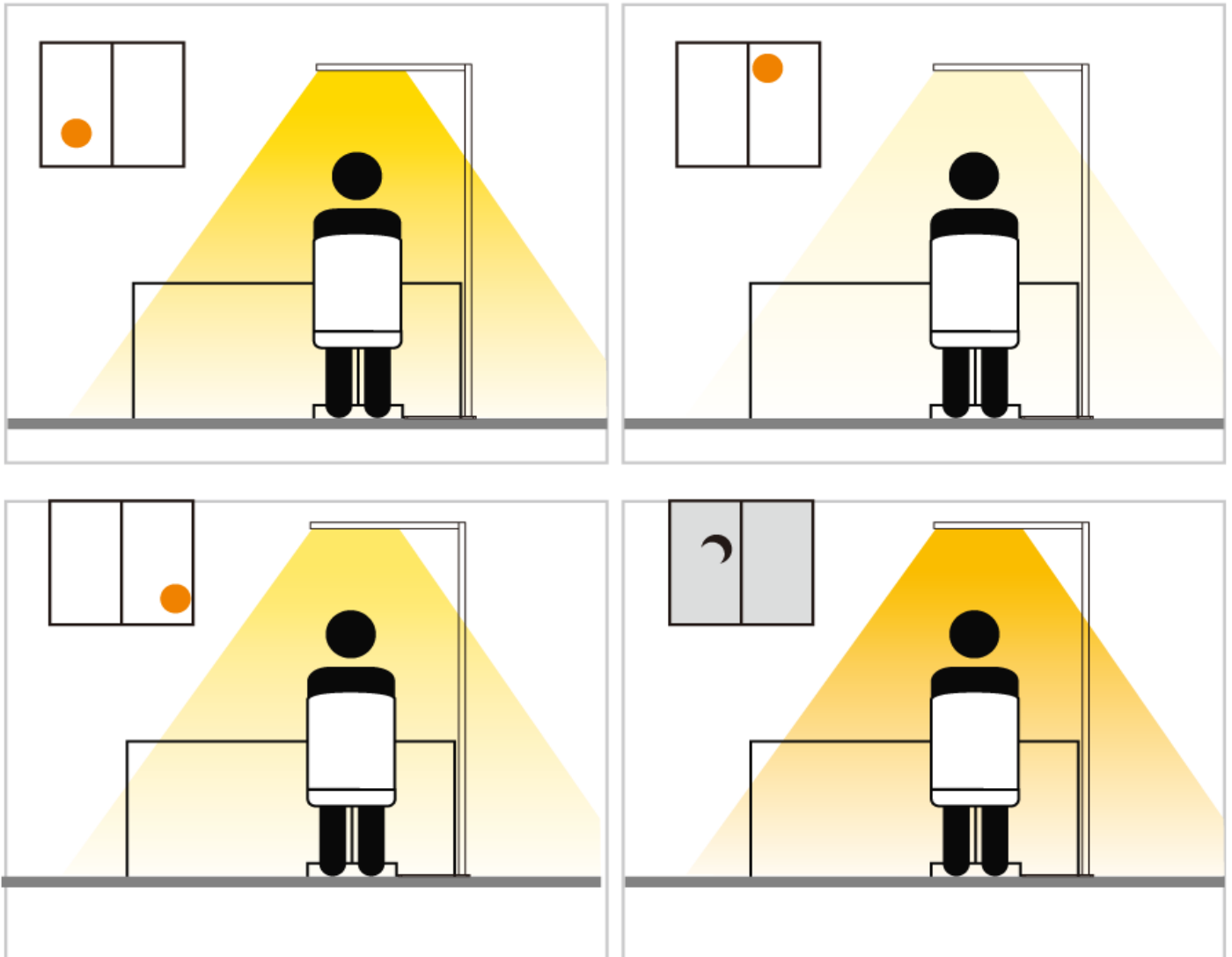
3. ohne Bewegung schaltet die  
Leuchte nach 30 min. ab /  
without presence the lamp turn off after 30 min.



4. die Leuchte schaltet sich bei  
Bewegung automatisch ein /  
the lamp turns on automatically when presence  
is detected

Stehleuchte, Office One Motion / *Floor lamp, Office One Motion*  
200-240V AC/50-60Hz, 80,00 W

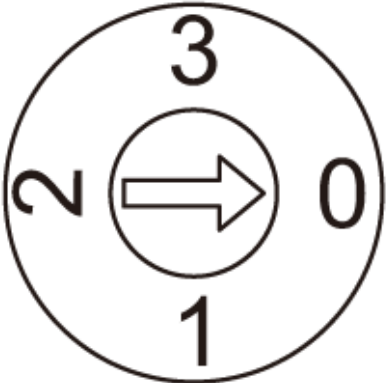
B: Tageslichtsensor / Daylight Sensor



1. Licht einschalten und auf gewünschte Helligkeit dimmen. Die Einstellung wird vom Tageslichtsensor als Standard gespeichert. / Turn on the lamp and dimming to a comfortable brightness. The daylight sensor will memory the adjustment as standard.
2. Wenn das Umgebungslicht sich ändert, passt der Sensor die Helligkeit dem gespeicherten Standard an. (Toleranz 10%) / When the ambient brightness changed the sensor adjust the light to the saved standard. (tolerance 10%)
3. Die Helligkeit wird angepasst bei einer Änderung im Bereich von 20° unter dem Sensor. / The brightness will be effective if there is any change within area of 20° under the sensor.

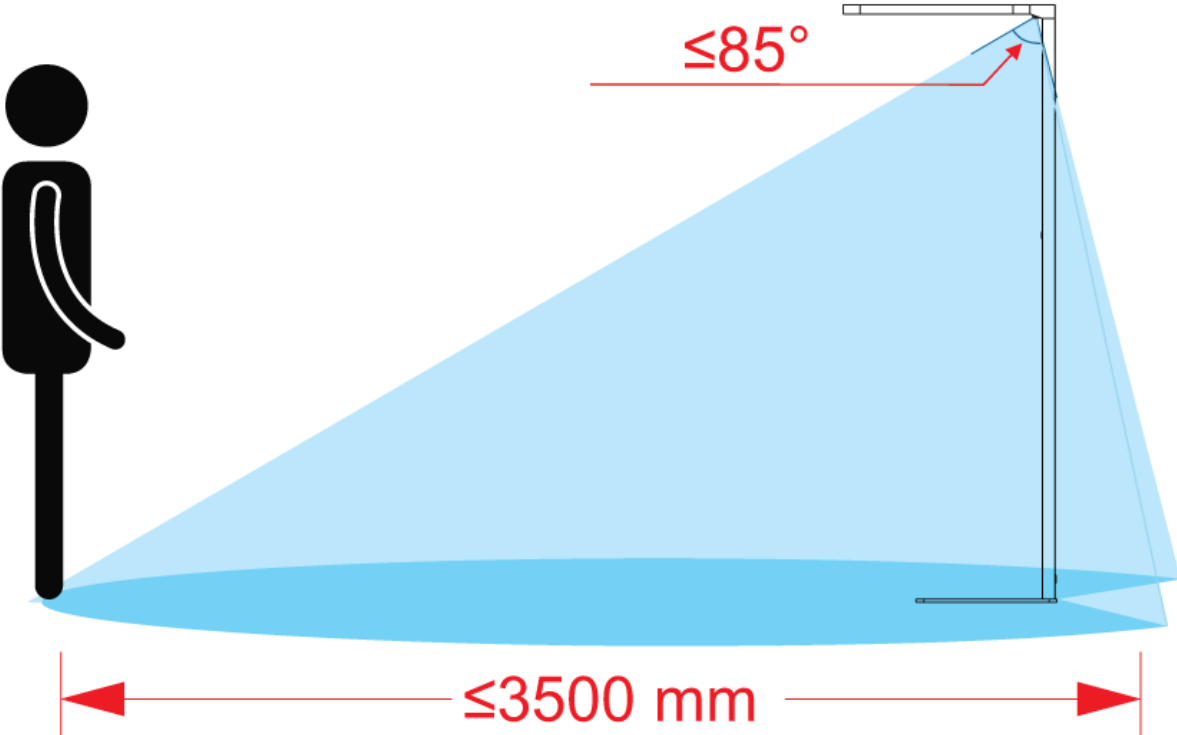
Stehleuchte, Office One Motion / *Floor lamp, Office One Motion*  
200-240V AC/50-60Hz, 80,00 W

C: Schalter Einstellungen / Switch Adjustment



Schalter Stellung / Switch adjustment	Sensor A	Sensor B
0	OFF	OFF
1	ON	OFF
2	ON	ON
3	OFF	ON

Erkennungsbereich / Detectable Area



Stehleuchte, Office One Motion / *Floor lamp, Office One Motion*  
200-240V AC/50-60Hz, 80,00 W

Dimmung / Dimming

