

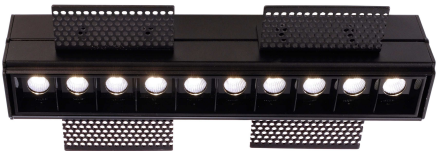
# Product datasheet

Built in ceiling lamp, Ceti 10 Hide, black, 28-29V DC, 20,00 W, warmwhite

## Technical Data

### General Characteristics

Material	aluminum die casting
Colour	black
Optics	
included in delivery	1x mounting sleeve, 4x mounting angles 8x screws, 2x hooks



### Electrical Characteristics

Power / power consumption	20,00 W / 20,20 W
input voltage	28-29V DC
input current	700 mA
Base (standard designation)	
Number of bases	
Power supply unit	excl. LED-power supply unit
Electronically reversible	dimnable via optional power supply
Connection possibility	wire with open ends
Protection class I, II, III	III

### Light Technical Data

Bulb	LED-module fixed
Colour Designation	warmwhite
Colour temperature	3000 K
Luminous flux	1600 lm
Beam angle	45°
LED type	SMD
LED quantity	10
Spectral power distribution	582 nm



# Product datasheet

Built in ceiling lamp, Ceti 10 Hide, black, 28-29V DC, 20,00 W, warmwhite

## Light Direction

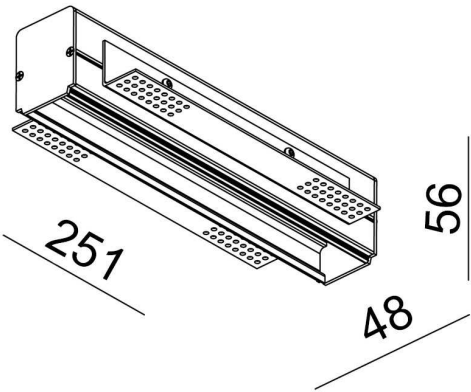
Rotating and tilting range	fixed
Angle of inclination	
Radiation direction	
Reflector / lense	symmetrisch

## Dimensions & Weight

Length	251,00
Width	48,00
Height	56,00
Diameter	0,00
Mounting Depth	50,00
Product Weight	640 g

## Cut-out dimensions

Length	253,00
Width	48,00
Diameter	0,00



# Product datasheet

Built in ceiling lamp, Ceti 10 Hide, black, 28-29V DC, 20,00 W, warmwhite

## Absolute maximum ratings

The LED will get damaged and the lifetime will decrease when you overrun absolute maximum ratings.

Working temperature	-5°C - +40°C
Storage temperature	-10°C - +40°C
IP - Code	IP20




## General product data

### Environmental Characteristics

Energy label	
Energy consumption	21 kWh/1000h

### Lifespan

Lamp life time	30000 h
Luminous flux (end of lifetime)	0,70
Number of switching cycles	15000

IP20	Protection against penetration of foreign objects > 50 mm. No protection against penetration of water.
	Lightings of Protection Class III Luminaire in which protection against electric shock relies on supply at safety extra-low voltage (SELV) and in which voltages higher than those of SELV are not genrated.
	Because of the complex manufacturing process of the LED the above shown data are just a statistical size, which is not forced to be the realistic data of every LED.
	The light source of this luminaire may only be replaced by the manufacturer or by a service technician appointed by him or by a comparable qualified person

**Dear customer,**

thank you for deciding to purchase our product. The product fulfils the requirements of effective European and national guidelines.

To maintain the condition of the product and to ensure safe operation, you - as the user - must observe the product notes and the operation manual! They contain important information for the start-up and handling. It is important, therefore, that these documents are archived carefully for referring to information at a later stage.

## **1. Safety Instructions**

We are not responsible for any property damage or personal injury caused by failure to observe these product notes and manual, improper handling or unauthorised modifications.

It can only be installed by a qualified electrician.

Make sure that the item has not been damaged during transport before putting the light into operation. It may not be operated if there are any damages to electrical parts.

It may only be operated once removed from the packaging.

The type plate must not be removed.

The connection lines in the building must be disconnected before installation and secured against being switched back on. For this, trip the corresponding fuse switch in the building installation.

Make sure the electrical specifications for the connection lines correspond with the specifications given on the nameplate of this product.

Please take care during installing for the correct polarity (V+, V-) and do also use the right power supplies with the following safety measures: SELV = Safety Extra Low Voltage, overload protection and short-circuit protection.

Make sure that the cables and plugs are not subject to tension or torsional forces and do not bend the cables. Protect all cables and insulation against possible damages.

Output lines should be laid separately and spaced apart from other lines. The power supply cables and the lamp feeders must not cross each other.

The cable lengths may be max. 2 m between power supply and lamp. In addition, the radio interference suppression is not guaranteed and it comes through strong inductive coupling with the power line brownouts.

Do not allow the product to come into contact with extreme heat or naked flames.

Use the supplied fastening material only when it is suited for the installation background.

The product must not be covered with objects (decorations) or thermally insulating coverings /similar materials.

Before disposal of the packaging material make sure that all components are removed.

Keep packaging material away from the reach of children and pets. The packaging contains small parts that may be swallowed by children.

## **2. Proper Use**

This product is only intended for lighting purposes and may only be operated on normal or non-flammable surfaces.

Use the product only in protected and dry interior rooms.

Make sure that the surface is suitable for permanently and reliably taking the weight of the light.

## **3. Care**

Repairs may only be carried out by a qualified electrician.

Disconnect the entire product from the mains first and allow it to cool down before cleaning or maintaining.

Use a dry or slightly moistened cloth for cleaning.

Never use any chemicals, flammable cleaning agents or abrasives. These may cause damage to the surface coating and/or the insulators.

## **4. Faulty Function**

Light switched on at the switch?

Transformer mounted and connected properly?

If available; remote control intact? Check the batteries.

Check the connected lines.

Lamp defective?

## **5. Changing Lamps**

The light source of this lamp is not replaceable. When the light source has reached its end of life, replace the entire luminaire.

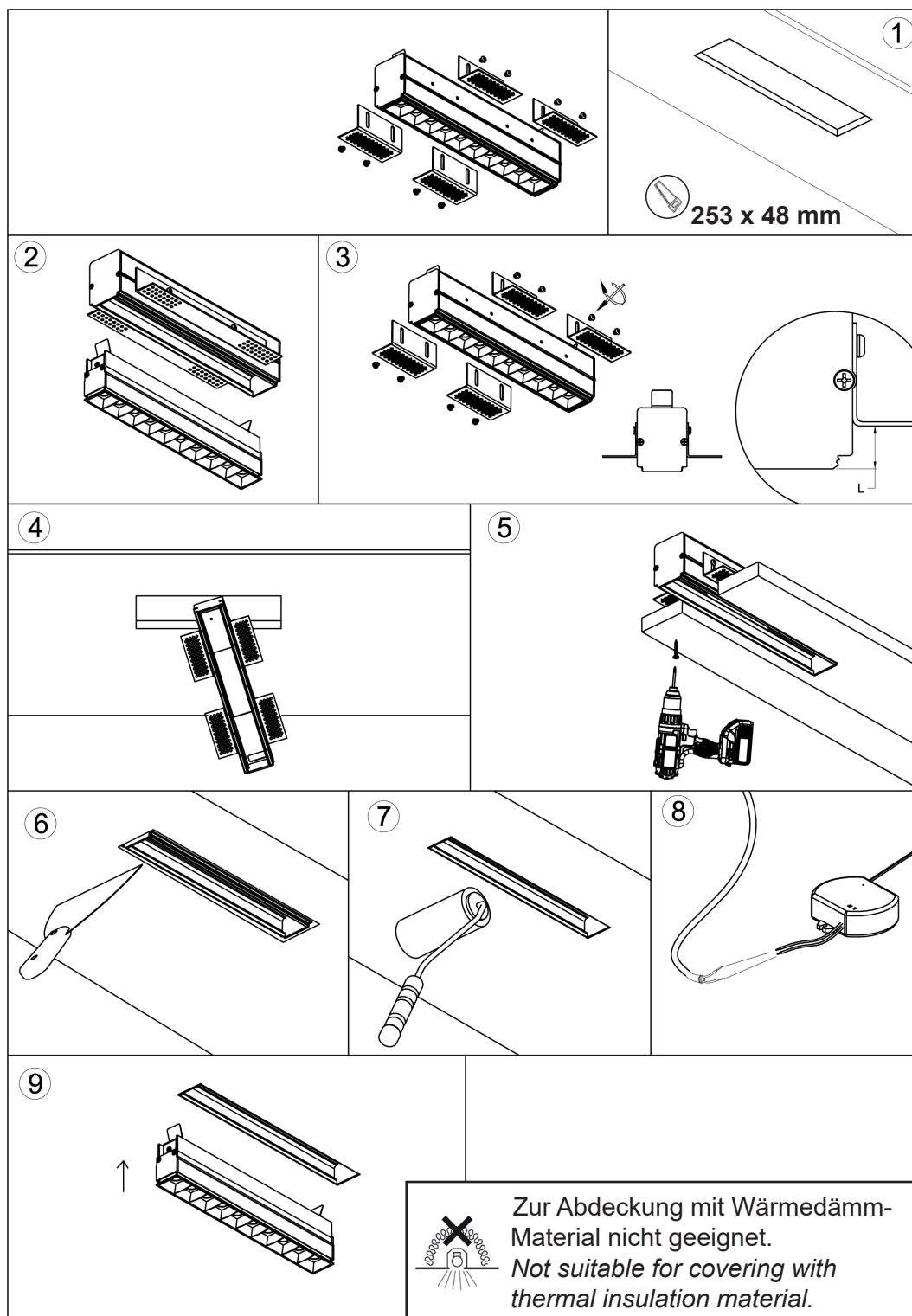
## **6. Storage and Disposal**

Used electronic devices must be brought back to public collection points and must not be disposed of as household waste.

Storage in a dry and clean environment. Do not strain the product mechanically during storage.

Deckeneinbauleuchte, Ceti 10 Hide / Built in ceiling lamp, Ceti 10 Hide  
700 mA, 20,00 W

**Achtung! Für diese Arbeiten müssen Sie die Spannungsversorgung trennen.**  
**Attention! For this work you must turn off the power supply.**

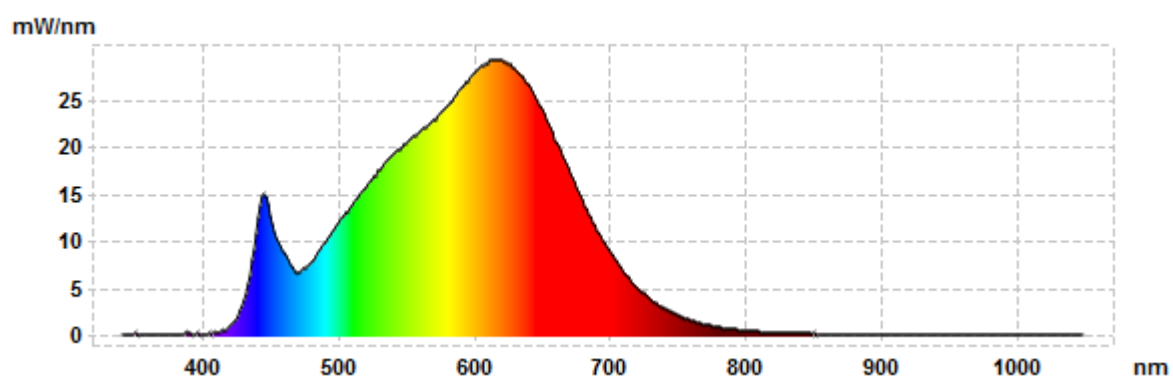


# Spectrum Test Report

Client name:		Report time:	2018-09-20
Item No:		Model name:	

## Results

### Spectrum



CIE 1931 2° observer		CIE 1964 10° observer		Color Parameters	
x	0.4315	x	0.4372	CCT [k]	3108
y	0.4058	y	0.4027	Chromaticity Error	0.002
u'	0.2463	u'	0.2513	Color Peak	623.45
v'	0.5213	v'	0.5209	Color Peak Value	29.33
				Color Dominant	581.8
				Radiometric	5.1812
Rendering Indices		Ra	91.2		
R1	90.9	R8	80.9		
R2	94.1	R9	54.2		
R3	96.1	R10	85.3	Electrical Parameters	
R4	91.9	R11	91.9	Luminous [lm]	1526.87
R5	90.5	R12	80.8	Luminous Efficacy [lm/W]	76.0835
R6	92.6	R13	91.6	Power [W]	20,0683
R7	92.7	R14	97.2	Current [A]	0.699
				Voltage [V]	28.71